



INNOVATIVE
SAFETY & SECURITY
DOORS

TECHNICAL
DATA
SHEET

DEFENDOOR DS E120-1

DOOR SPECIFICATION

- custom manufacturing
- leaf without rebate
- rigid steel frame, rectangular frame
- leaf thickness 65 mm
- leaf construction of 2 steel skins 0.9 mm
- paper honeycomb infill
- powder coating, RAL palette

DOOR SIZES

- width=1220 (+10%max); Height=2300 (+10%max)

CERTIFICATES

- Fire resistance test report no. 533452
- Warrington Fire UK
- Certificate of Constancy of Performance
- under preparation

STANDARD EQUIPMENT

- 2 pcs of non-adjustable stainless steel hinges (optional: 2 pcs of stainless steel 3D hinges)
- Adjufix screws for faster installation
- set of stainless steel handles / panic bar / push plate
- reinforcement for door closer
- door closer

ALTERNATIVE EQUIPMENT

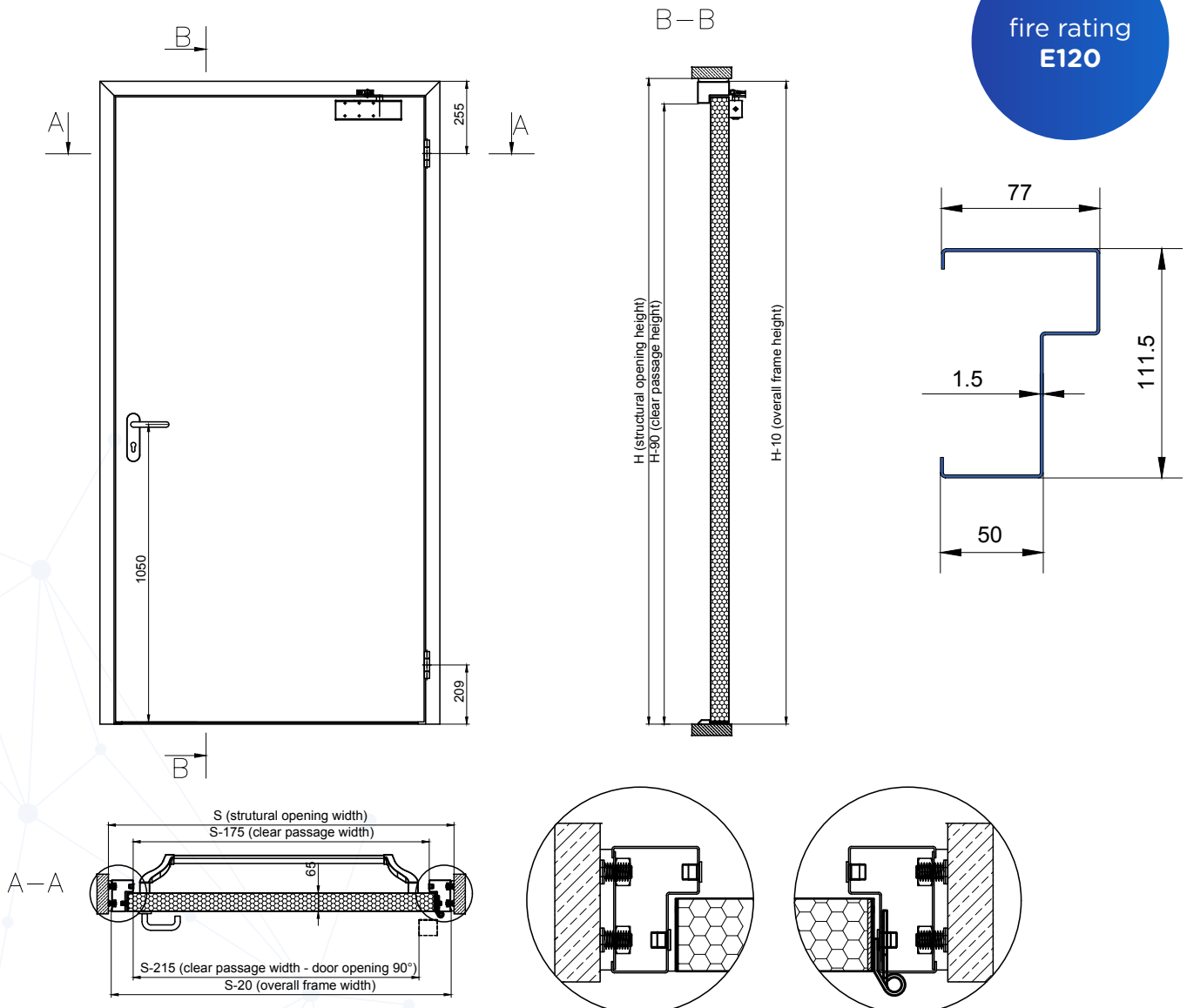
- locks, panic locks, handles, panic bars, electric strike, maglocks
- other alternative equipment and other door features on request

OPTIONAL DOOR CONSTRUCTION

- glazed with rectangular or round glazing
- single or double glass

DRAWINGS

fire rating
E120



DEFENDOOR DS E120-2

DOOR SPECIFICATION

- custom manufacturing
- leaf without rebate
- rigid steel frame, rectangular frame
- leaf thickness 65 mm
- leaf construction of 2 steel skins 0.9 mm
- paper honeycomb infill
- powder coating, RAL palette

DOOR SIZES

- width=2350 (+15%max); Height=2300 (+15%max)

CERTIFICATES

- Fire resistance test report no. 541343
- Warrington Fire UK
- Certificate of Constancy of Performance
- under preparation

STANDARD EQUIPMENT

- 2 pcs of non-adjustable stainless steel hinges (optional: 2 pcs of stainless steel 3D hinges)
- Adjufix screws for faster installation
- set of stainless steel handles / panic bar / push plate
- reinforcement for door closer
- door closer + closing sequence controller

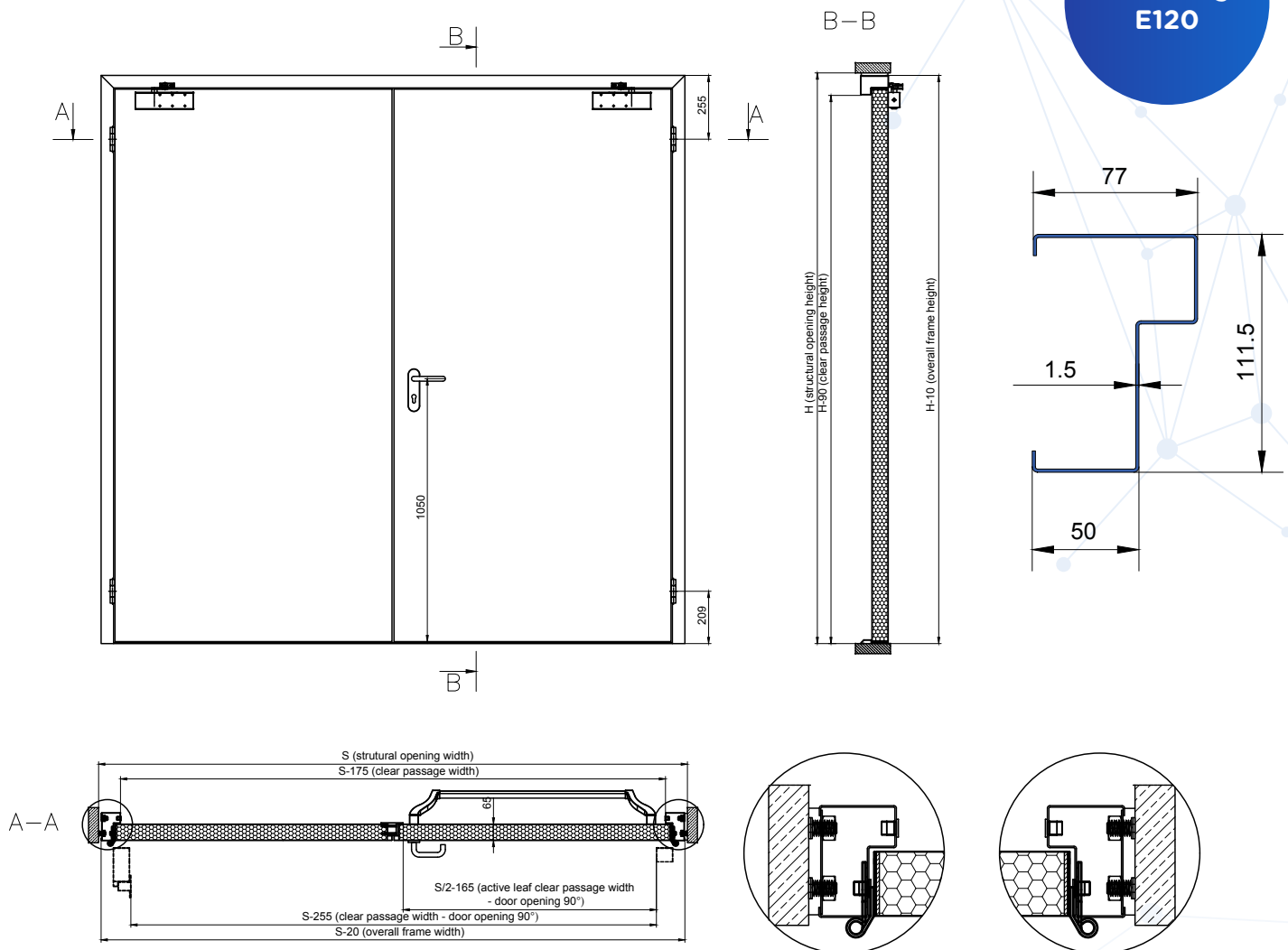
ALTERNATIVE EQUIPMENT

- locks, panic locks, handles, panic bars, electric strike, maglocks
- other alternative equipment and other door features on request

OPTIONAL DOOR CONSTRUCTION

- glazed with rectangular or round glazing
- single or double glass

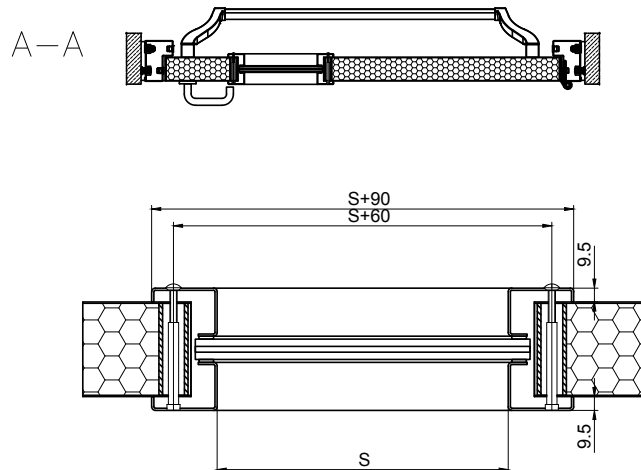
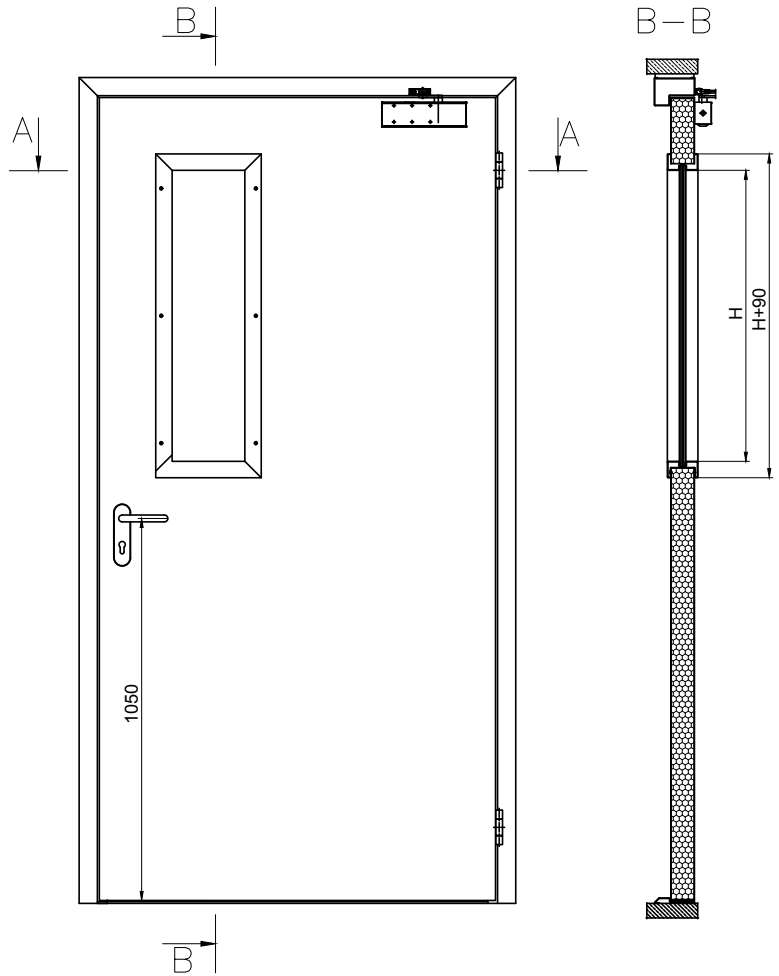
DRAWINGS



GLAZING

- Glass sight size: 200 x 800 mm (-50%)
- Glass reference: Contraflam Lite 120 (5/5) - Vetrotech Saint Gobain.
- Glass frame: galvanized steel 1.5 mm

DRAWINGS

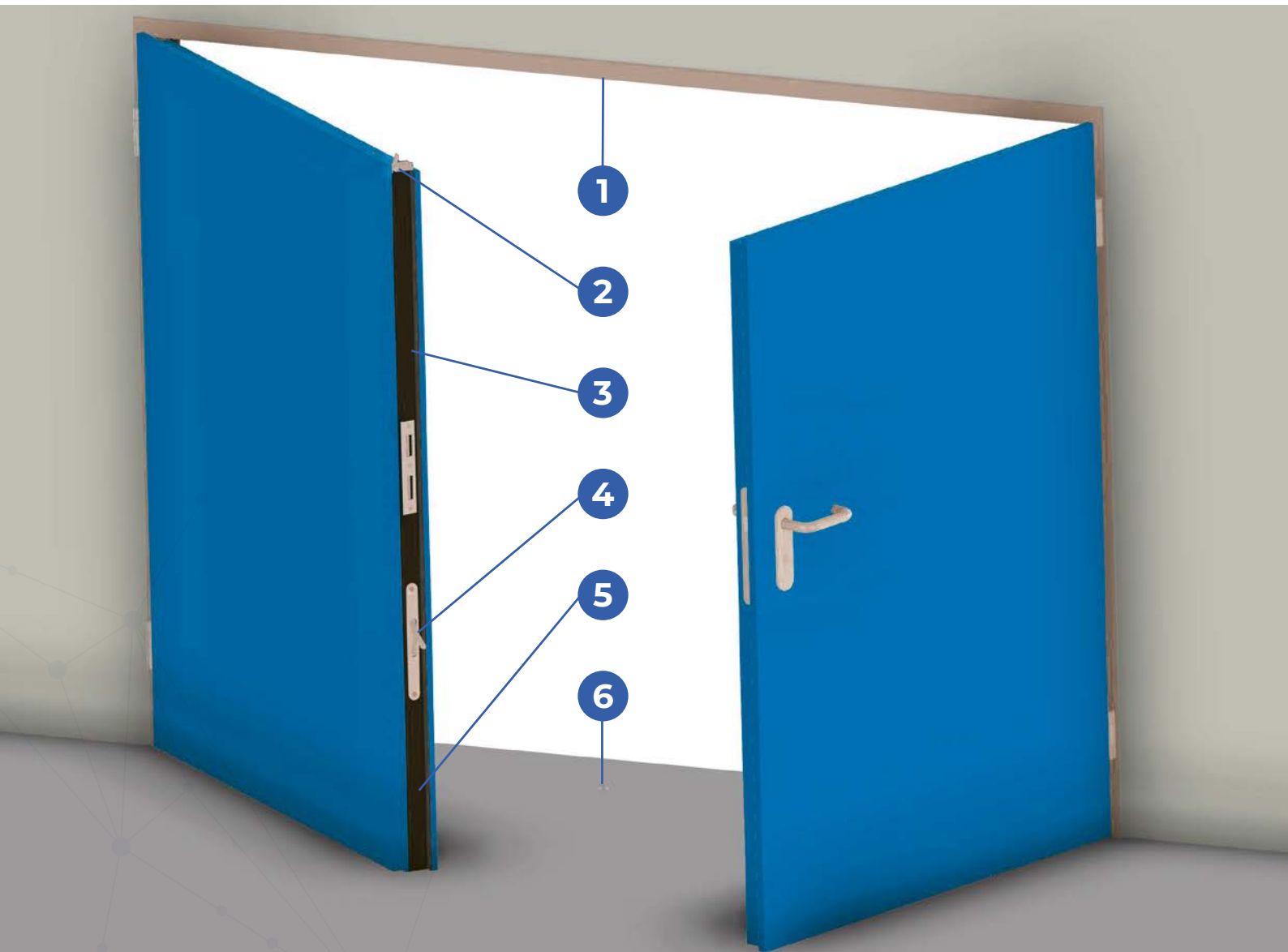


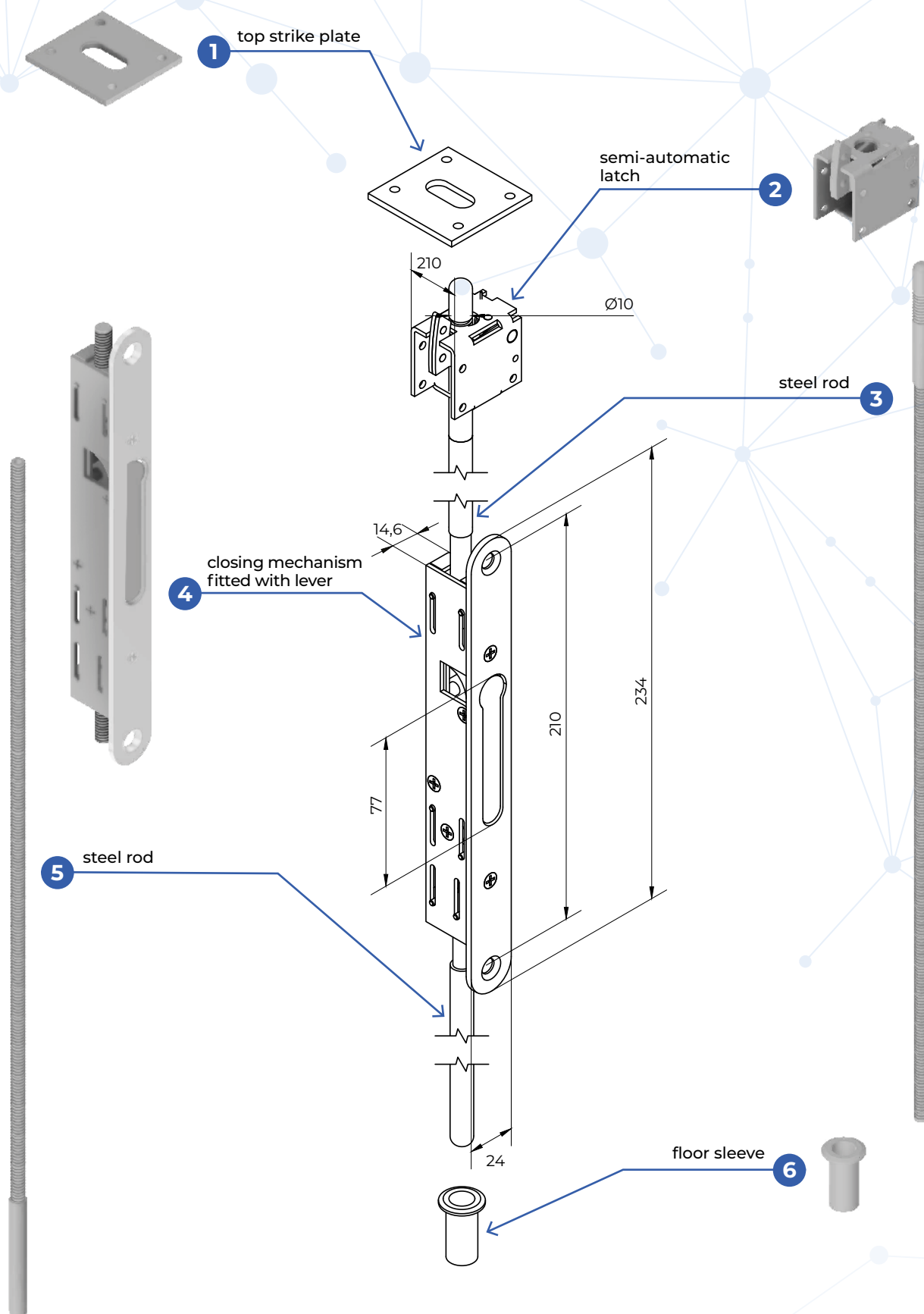


FLUSH BOLT on passive door leaf

- The flush bolt is a semi-automatic set consisting of closing mechanism fitted with lever (4), steel rods (3,5), semi-automatic latch (2) and floor sleeve (6).
- The lever and foreplate of mechanism are made of stainless steel, the mechanism is made of zinc coated steel.
- The passive leaf is locked automatically by steel rods entering up into top of door frame and down in the floor (into floor sleeve).
- It is unlocked by manual lifting of the lever, effected by withdrawal of rods into the mechanism.

**semi-automatic
mortise flush bolt
(espagnolette)**



FLUSH BOLT on passive door leaf



DEFENDOOR FIRE RESISTANT DOORS TRADING L.L.C

Bay View Tower 15 Floor, Unit 1509. 206, Marasi Drive street Business Bay, Za'abeel, Dubai United Arab Emirates
dubai@defendoor.ae | www.defendoor.ae